



CUSTOM PRODUCTS & SERVICES

6286 Claude Way E, Inver Grove Heights, MN 55076-4435
PH: 888-444-1202 (Toll Free) or 651-452-0113 Fax: 651-452-2264

E-mail: Info@custom-products.com
Website: www.custom-products.com

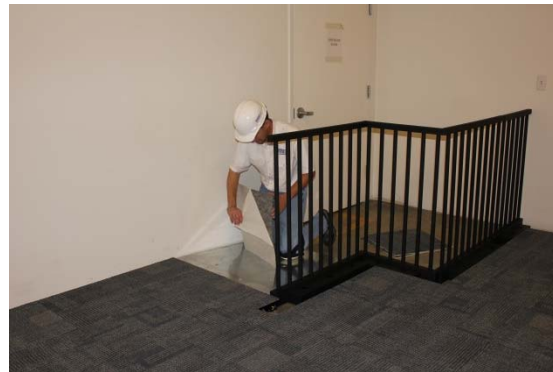
POWERFLOR USA, INCORPORATED CABLE MANAGEMENT SYSTEMS

Ramp / Rail Information Bulletin

Our Cable Management System has an overall nominal height of 3" (2 5/8" floor structure + thickness of specified carpet tile). This height does not meet typical building code standards (minimum 6 1/2") to function as a step. As such our standard systems are designed to include ramping and railing as required, on a per project basis. We offer three standard ramp slope options to address system access.

1 / 12 Slope Ramp : (36" long x unit widths to overall required width)

When ADA (Americans with Disabilities Act) standards are required, we make every effort to design our systems to adhere to the ADA recommendations, which will include appropriate setbacks, rails, and wheelchair turnaround areas.



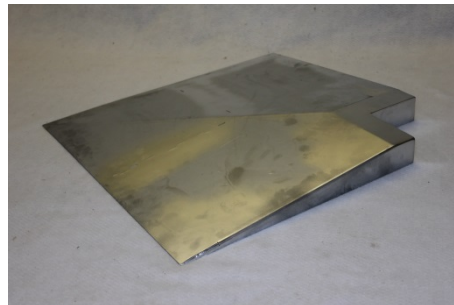
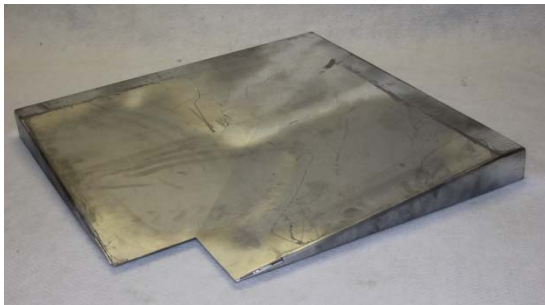
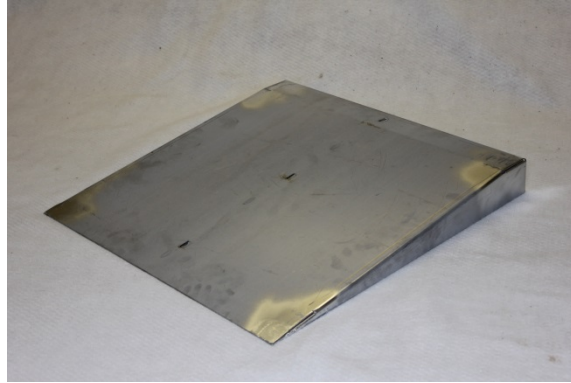
1 / 20 Slope Ramp: (54" long x unit widths to overall required width)

The ADA Standards identify any floor elevation change with a slope of 1 to 20 or less as being a grade change, and shall not require the setbacks and clearances required for greater slopes. We offer our 1/20 slope ramps, as an option that allows the bottom of the ramp to end at the door threshold, when doors open out of the room, conserving interior space.



1 / 8 Slope Ramp: (24" long x unit widths to overall required width)

ADA access standards allow for this slope for existing spaces being renovated. We offer our shortest ramp option (24" top to bottom). We also offer this slope with components that provide both an internal and external 90 mitered turn. This eliminates the need for a rail or step down edge. **Please Note!!** Some local authorities require a waiver for use of this slope ramp. Please consult with your local occupancy authority.



Rail: (39 5/8" high x 24" or 36" wide)

When site locations require that ramp areas and traffic flow be contained we offer our standard railings. Our rails are provided in either 24" or 36" widths and can be connected end to end, in a straight line, or at angles to meet any site requirements.



Please Note !!

- Individual component part specification cuts sheets are available upon request.
- All ramps and sub-floor areas are typically carpeted with same carpet tile used on adjoining systems. Carpet tiles provided pre-glued for easy installation on these areas.
- Custom Ramp Slopes, Rail Widths, and Rail Designs are available upon request.
- The Department of Justice, Standards for Accessible Design (ADA) is subject to revisions, changes, interpretations and exceptions based on local authorities. Powerflor USA exercises its best ability to design within the most current standards. However, final acceptance of any design is a local authority decision. We recommend to all clients, that any design provided, be reviewed by their governing authority. Powerflor USA does not guarantee the acceptability of its designs.